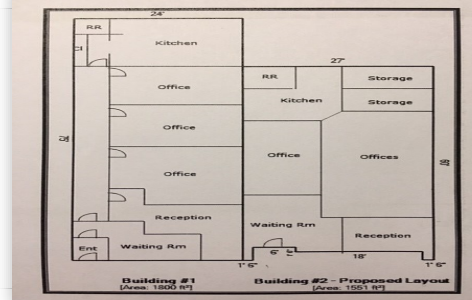




Aerial



MLS# : 24090-18050

Price : \$289,000

Type : Investment & Income

Size : 0.17 Acres

Year Built : 1945

Address : 400 East Historic Route 66 / 330 East Historic Route 66 ,
Waynesville , Missouri , 65583

FEATURES

- ✓ Pulaski County, Missouri
- ✓ East Historic Route 66
- ✓ Income producing property
- ✓ Commercial Real Estate
- ✓ Commercial Buildings
- ✓ Office Buildings
- ✓ Investment property for sale
- ✓ Fort Leonard Wood, Missouri

ABOUT THE PROPERTY

Prime, high traffic, investment property located on Historic Route 66 directly across from the Pulaski County Courthouse on the Waynesville Square. Lots of parking with a large public parking lot next door.

Both buildings are beautiful and newly remodeled with the ability to combine the two buildings in to one great space.

CONTACT US

MELODY ALLEN
REALTOR

📞 (417) 588-5723

✉ m5allen@yahoo.com

🏠 VIP Realty

📍 1400 W. Elm St. ,Lebanon,
Missouri, United States, 65536